

Instruction Sheet

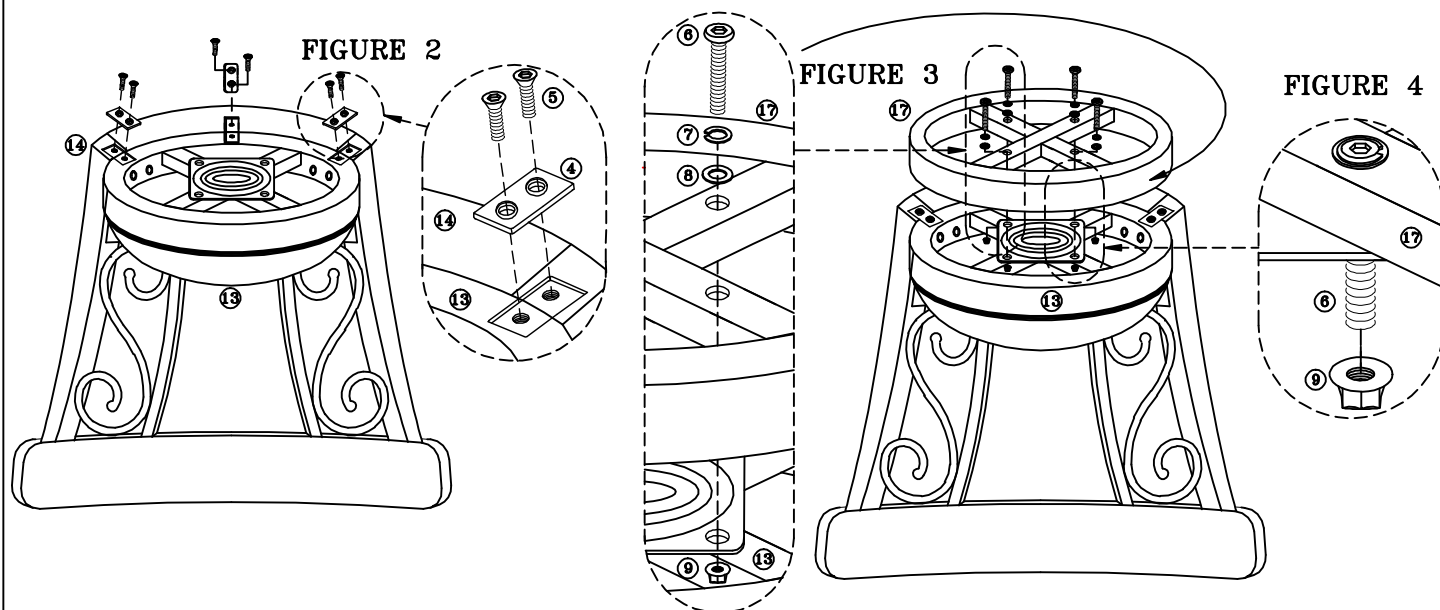
STEP 2- Assembly of Metal Bracket to Seat and Back Panel.

- Align holes on metal bracket (4) with threaded inserts on seat (13) and back panel (14).
- Secure metal bracket (4) with screw (5). Use Allen wrench (11). SEE FIGURE 2

NOW TIGHTEN SCREWS (1) FROM STEP 1 (FIGURE 1) USE ALLEN WRENCH 10.

STEP 3- Assembly of Top ring to Seat.

- Align pilot holes on top ring (17) with swivel holes on seat (13). SEE FIGURE 3
- Insert spring washer (7) and flat metal washer (8) on screw (6). Now insert screw (6) on top ring (17) holes and into swivel holes. SEE FIGURE 4
- Carefully turn top ring at 45 degree and hold on place.
- Secure top ring (17) with hex nut (9). Use Allen wrench (11) to tighten screws. SEE FIGURE 4



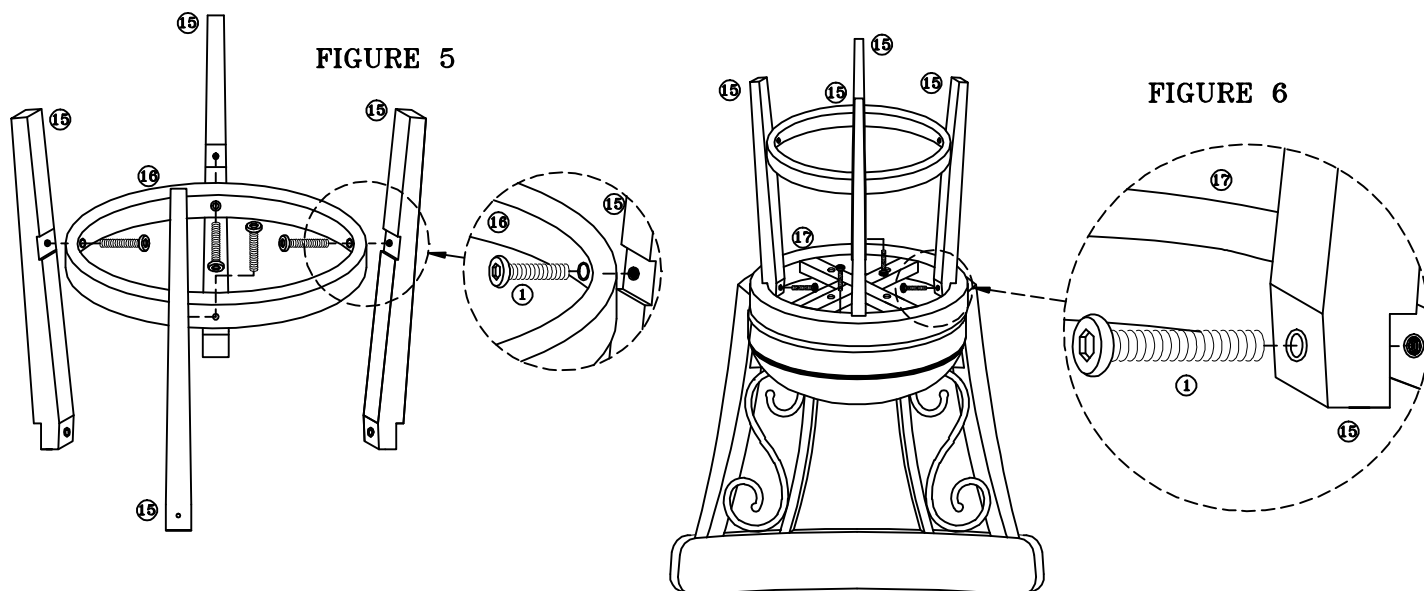
STEP 4- Assembly of Foot Rest to Legs.

- Align pilot holes on foot rest (16) with threaded insert on legs (15). SEE FIGURE 5
- Secure foot rest (16) with screw 1. Finger tighten screws. DO NOT TIGHTEN SCREWS COMPLETELY

STEP 5- Assembly of Legs to Top Ring.

- Carefully align pilot holes on legs (15) with threaded inserts on top ring (17). SEE FIGURE 6
 - Secure legs (15) with screw (1). Use Allen wrench (10) to tighten screws.
- NOW TIGHTEN SCREWS (1) FROM STEP 4 (FIGURE 5)

APPLY ADHESIVE FOOT GLIDE ON EACH LEG (OPTIONAL)



FASHION BED GROUP®

A *Lewett & Platt* COMPANY

6755 W. 65th Street—Bedford Park, IL 60638

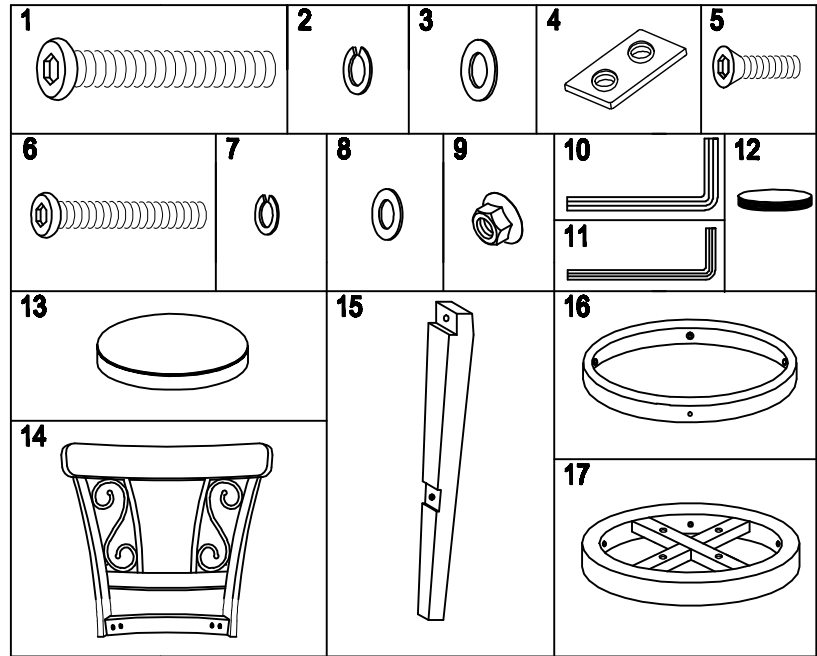
Parts List For Stool # C1X076 / C1X070

BAR STOOL CARTON

- (13) SEAT-1
- (14) BACK PANEL-1
- (15) LEGS -4
- (16) FOOT REST RING-1
- (17) TOP RING-1

HARDWARE BAG # 394102

- (1) 5/16-18 X 1 3/4" FLAT ALLEN HEAD SCREW-12
- (2) 5/16" ID METAL SPRING WASHER-4
- (3) 5/16" ID X 3/4" OD FLAT METAL WASHER-4
- (4) METAL BRACKET-3
- (5) 1/4-20 X 1 1/2" COUNTERSUNK FLAT ALLEN HEAD SCREW-6
- (6) 1/4-20 X 1 5/8" FLAT ALLEN HEAD SCREW-4
- (7) 1/4" ID METAL SPRING WASHER-4
- (8) 1/4" ID X 5/8" OD FLAT METAL WASHER-4
- (9) 1/4-20 HEX NUT-4
- (10) 5MM ALLEN WRENCH-1
- (11) 4MM ALLEN WRENCH-1
- (12) ADHESIVE FOOT GLIDE-4



SAVE ALL PACKAGING MATERIALS UNTIL PRODUCT IS FULLY ASSEMBLED. HARDWARE AND SMALL PIECES MAY NOT BE SEEN AND COULD BE ACCIDENTALLY DISCARDED WITH PACKAGING MATERIALS.

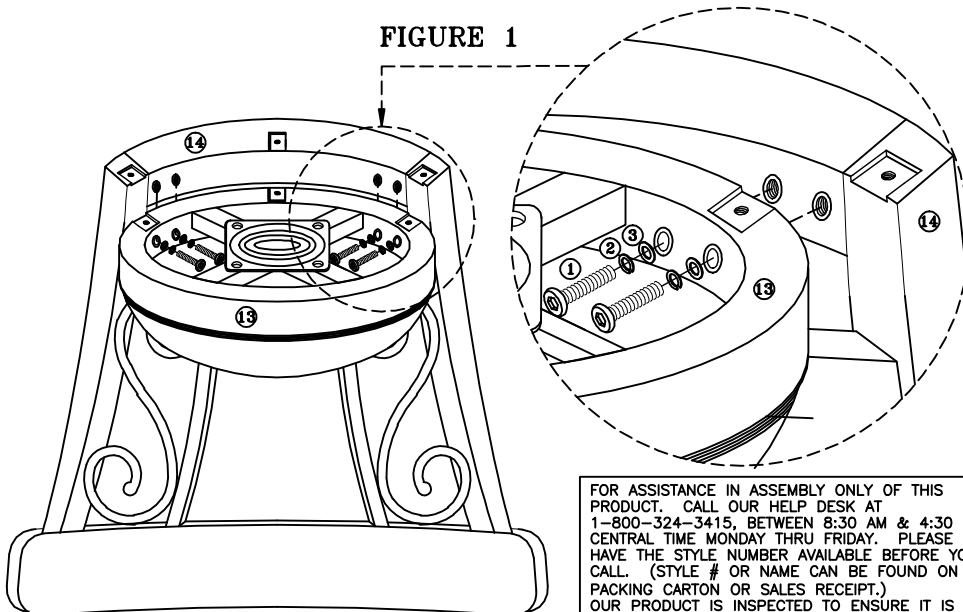
Instruction Sheet

NOTE: FOR EASY ASSEMBLY YOU NEED THE HELP OF OTHER PERSON.

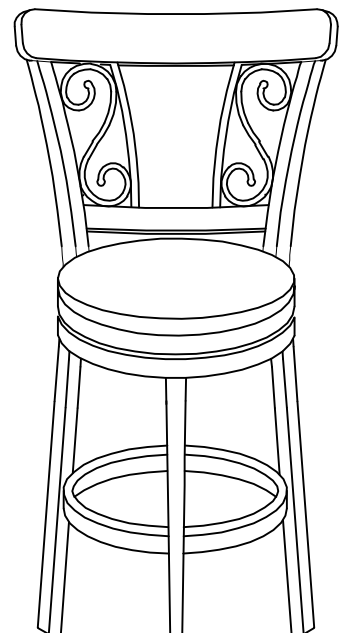
STEP 1- Assembly of seat to Back Panel.

- Align pilot holes on seat (13) with threaded inserts on back panel (14). SEE FIGURE 1
- Secure back panel (14) with screw (1), spring washer (2) and flat metal washer (3).
Finger tighten screws. DO NOT TIGHTEN SCREWS COMPLETELY

FIGURE 1



PRODUCT FULLY ASSEMBLED



FOR ASSISTANCE IN ASSEMBLY ONLY OF THIS PRODUCT. CALL OUR HELP DESK AT 1-800-324-3415, BETWEEN 8:30 AM & 4:30 PM CENTRAL TIME MONDAY THRU FRIDAY. PLEASE HAVE THE STYLE NUMBER AVAILABLE BEFORE YOU CALL. (STYLE # OR NAME CAN BE FOUND ON PACKING CARTON OR SALES RECEIPT.) OUR PRODUCT IS INSPECTED TO ENSURE IT IS IN GOOD CONDITION. IF YOUR FURNITURE APPEARS TO HAVE BEEN DAMAGED IN SHIPMENT OR YOU ARE IN NEED OF REPLACEMENT PARTS PLEASE CONTACT THE DEALER FROM WHOM YOU PURCHASED THE PRODUCT.