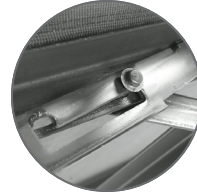
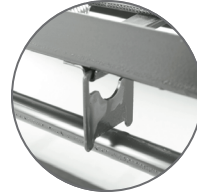


# Daybed Hardware

## TRUNDLES



**Locking Spring**  
Automatically lifts the unit into the “up” position; locks into place; allows for safe, controlled closing for storage.



**Gravity Locks**  
Extra security while unit is in the “up” position.

**EASY USE** – spring-loaded design safely “pops” open and closed

**SAFE** – gravity locks ensure stability in “up” position

**SUPPORT** – helically suspended poly or link fabric deck

**CENTER SUPPORT** – dual 1” x 1” angle steel

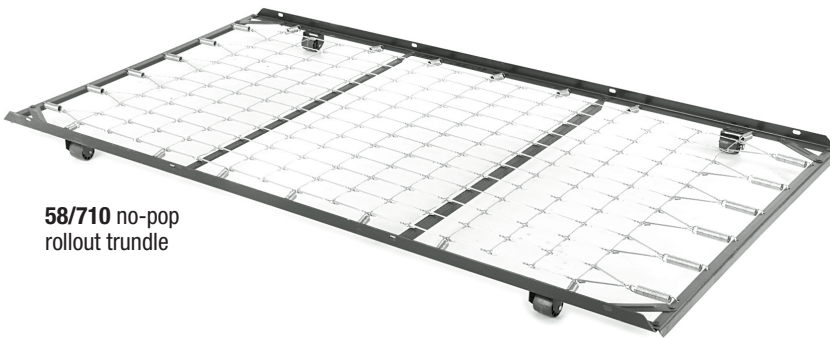
**DIMENSIONS** – 38.5” W x 72” L x 15.25” H (open)/4.5” H (closed)

**MATTRESS HEIGHT** – 8” or less when used with a daybed

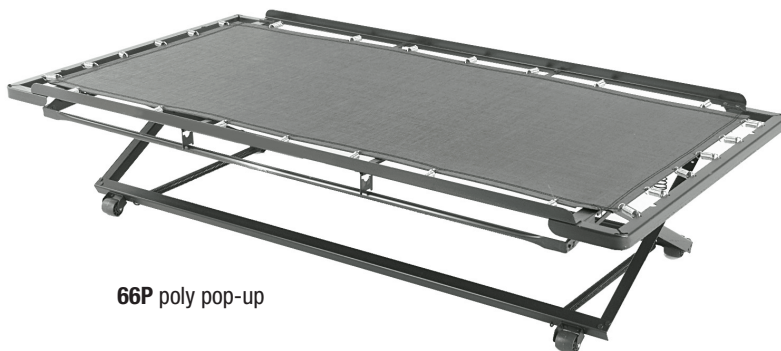
66 link pop-up



58/710 no-pop rollout trundle



66P poly pop-up



Contact your Fashion Bed Group representative for more information.

FashionBedGroup.com